

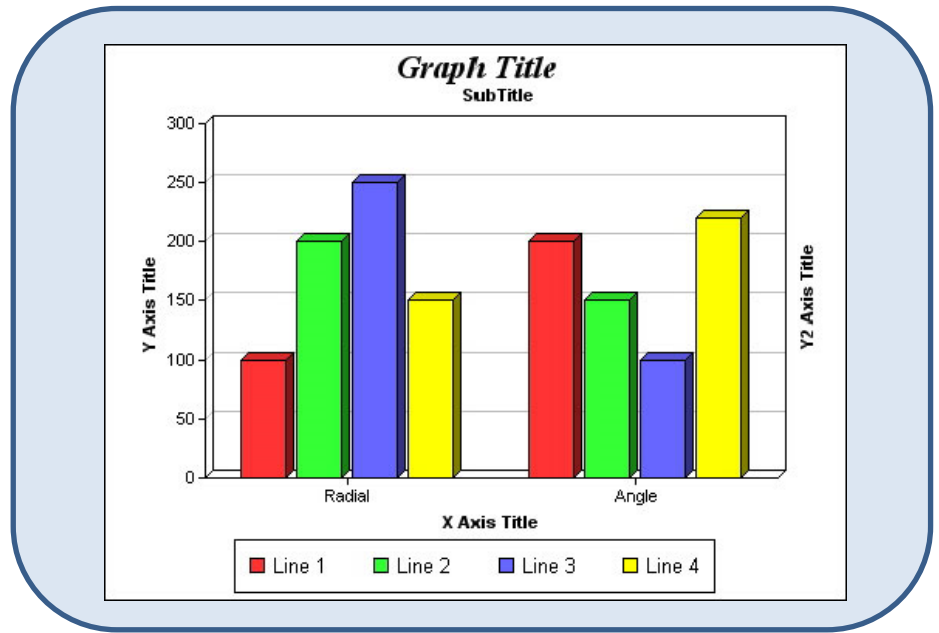


# The 'Bar Graph'

Has a title

Has labels on the axis

Has a scale on both axis



## What is it?...

*A picture of the number of frequencies for a particular category shown by comparing the heights of the bars (blocks or columns).*



2

## Advantages

- **Easy to draw and understand**
- **You are able to find the most and least very easily**
- **You can plot more than one data set to compare two or more situations simultaneously**

## Disadvantages

- **Over usage makes them boring to look at**
- **The correct use of scale on the y axis is important to show relative differences or the graph can end up with big gaps and wasted space**