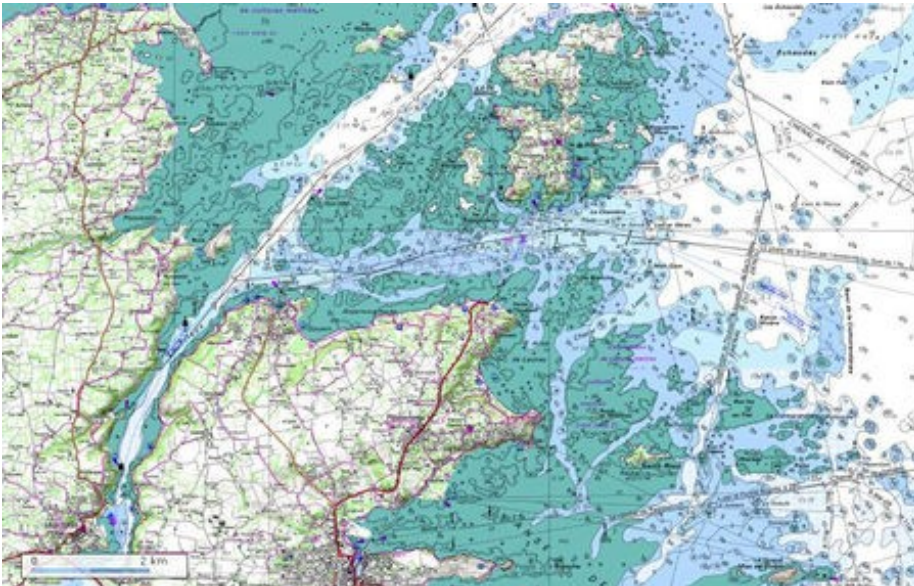


# SNSM

Three volunteer members of the SNSM station of Loguivy de la Mer will present you the activity of the SNSM.

Please take some notes and do not hesitate to ask some questions if you need more explanations

## Observing a maritime map



Try to situate Paimpol harbour, Brehat Island, the pier of L'Arcouest, Loguivy de la Mer and the Trieux river in this map

What are the main dangers for navigation ?

What can help you to avoid the dangers ?

Why are there different colours in this maritime map ?

## The acronyms

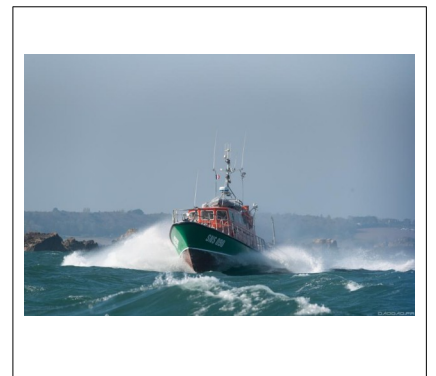
Note the sense of the acronyms



SNSM	
MRCC	
VHF	
CROSS	

## The SNSM's missions

What are the main missions of volunteer members of the SNSM ?



Describe the procedure at the beginning of a SNSM Mission.

What are the main human and material resources that the SNSM mariners can use in case of emergency ?

Note an example of a mission that will be reported to you.



