

Visit the site:

<https://view.genial.ly/5e085e321abb520f4eb6b397?fbclid=IwAR3FFSgOxVdlp7KIM45UTvvnwaPxTK48Yt-6j2b9y2K0de6nJg2Bw64alig>



Part 1- Game 1

Name these movie genres



Part 1- Game 2

What are the French equivalents?

Part 2- Games 1 and 2

Answer the questions

What was invented in 1880? And in 1881?

Write a short biography of the Lumiere Brothers (job, origins, invention)

.....

.....

.....



Part 3

What is the title of the film?

What type of film is it?

Who is the actress playing Mary Poppins?

In what city does the film take place?

Who directed this film?

What monument can you see at 2'12?

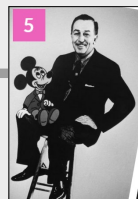


Part 5- Game 1

Write Walt Disney's biography.



.....



Part 5- Game 2

Complete with the correct word.

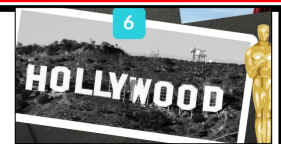
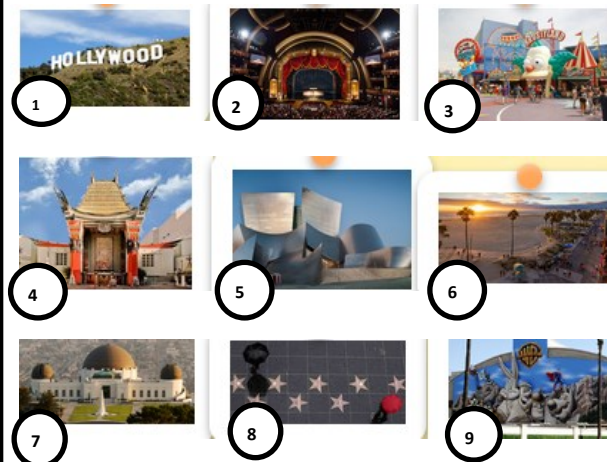
1. Walt Disney Mickey Mouse.
2. Thanks to Mickey Mouse he famous.
3. In the 1920s, cartoons in black and white and silent.
4. In 1923, he a small animation studio.
5. The first colour cartoon was
6. Walt Disney died a millionaire in
7. The first Disneyland opened in
8. Walt Disney was a cartoon maker, a businessman and
9. In 1955, Mickey Mouse became a TV star thanks to

Part 4 vrai ou faux? Corrige si nécessaire



1. Les grains de maïs explosent à la chaleur parce qu'ils contiennent de l'azote.
Vrai Faux
2. Il existe 6 types de grain de maïs.
Vrai Faux
3. Il faut environ 1600 grains de maïs pour remplir une tasse de popcorn.
Vrai Faux
4. Parmi les 6 types de grain de maïs, 4 peuvent servir à faire du popcorn?
Vrai Faux
5. Le maïs a été cultivé pour la première fois il y a mille ans.
Vrai Faux
6. Il existe deux formes de popcorn, champignon et papillon.
Vrai Faux
7. La première machine à popcorn a été inventée en 1880.
Vrai Faux
8. Les cinémas ne vendaient plus de popcorn aux USA dans les années 1920s parce que le maïs coûtait trop cher.
Vrai Faux

Part 6 What are these places?



1	
2	
3	
4	
5	
6	
7	
8	
9	